



KONICA MINOLTA

bizhub Evolution **INSTALLATION**

- ▮ Installation Guide
- ▮ Version: 1.1



bizhub Evolution

Table of contents

• Introduction	3
– About this document	3
– Abbreviations used.....	3
• Notes on installation.....	3
– Requirements.....	3
– Installation workflow	3
• Preparing for the installation	4
– Create Device Certificate	4
– Adjust the web browser proxy settings (optional).....	9
– Enable the IWS settings.....	11
– Enable HTTP Server.....	13
– Enable SSL communication for the WebDAV server	14
– Enable WebDAV client.....	16
– Deactivate auto reset for web browsers	18
– Deactivate system reset for web browsers.....	20
– Restrict deletion of jobs by other users	22
– Adjust OpenAPI settings	24
• Performing installations.....	26
– Install the IWS installation tool	26
– Install the bizhub Evolution app	29
– Register MFP on bizhub Evolution.....	37
– Enable MFP standard functions	41
• Uninstalling	45

Introduction

About this document

This Installation Guide will help you to install and configure bizhub Evolution on your multifunctional printers (MFPs). To ensure that you are able to execute the steps required for installation and configuration, you will need administrator rights for your PC and MFPs.

Abbreviations used

In the following text, we will refer to multifunctional printers with the abbreviation "MFP" rather than the full designation.

Notes on installation

Requirements

To install bizhub Evolution on your MFPs, the following requirements must be met:

- The MFP must be suitable for bizhub Evolution
(for more information, see: evolution.konicaminolta.de/support)
- The MFP must have a web browser and must be connected to the Internet.
- You must know the administrator password for the MFP.
- To use the IWS installation tool, you must have a PC with a Windows operating system and administrator rights.
- Your MFP and PC must be in the same network so that they can communicate with each other.

Installation workflow

First prepare for the installation:

1. Create a device certificate.
2. Adjust the proxy settings in the web browser (optional).
3. Enable the IWS settings.
4. Enable the HTTP server.
5. Enable SSL communication for the WebDAV server.
6. Enable the WebDAV client.
7. Deactivate "Auto Reset for Web Browsers".
8. Restrict the "Deletion of Jobs by other Users".
9. Adjust the Open API setting.

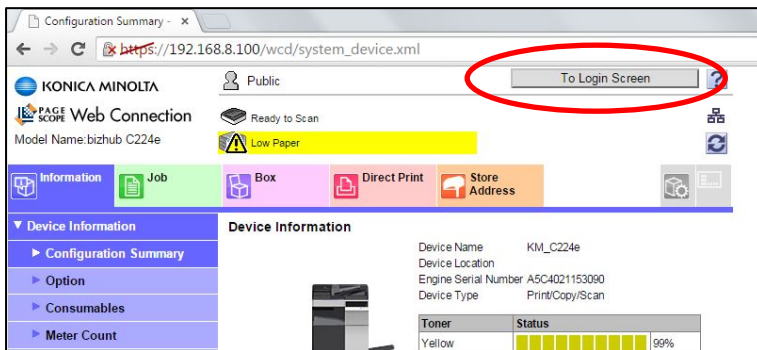
Then perform the actual installation:

10. Install the IWS installation tool.
11. Install the bizhub Evolution app.
12. Register the MFP on bizhub Evolution.
13. Enable the MFP standard functions.

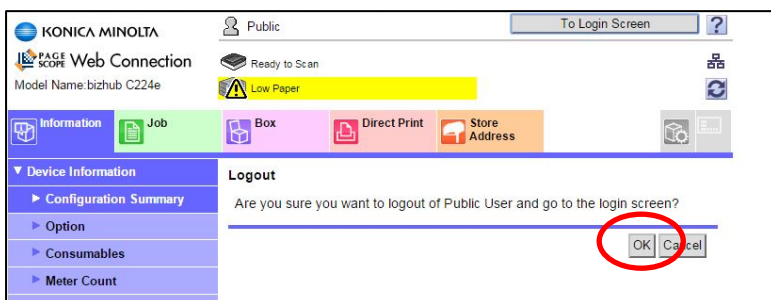
Preparing for the installation

Create Device Certificate

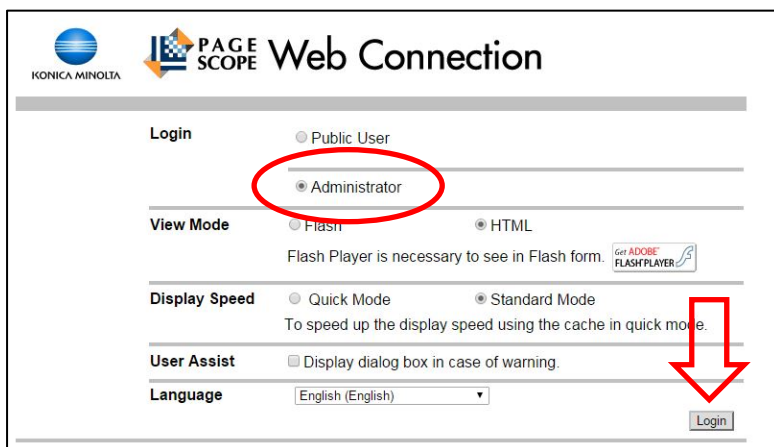
1. Start up the web browser on your PC.
2. Enter the network ID of your MFP so that you can access your MFP via PageScope Web Connection.
3. Click on [To Login Screen].



4. Confirm the security prompt with [OK].



5. Select "Administrator" and click on [Login].

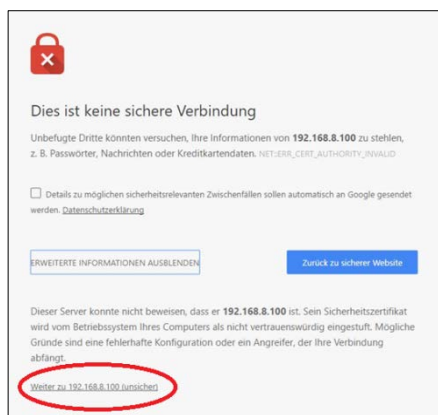


- Enter the administrator password for your MFP.
Click on [OK].

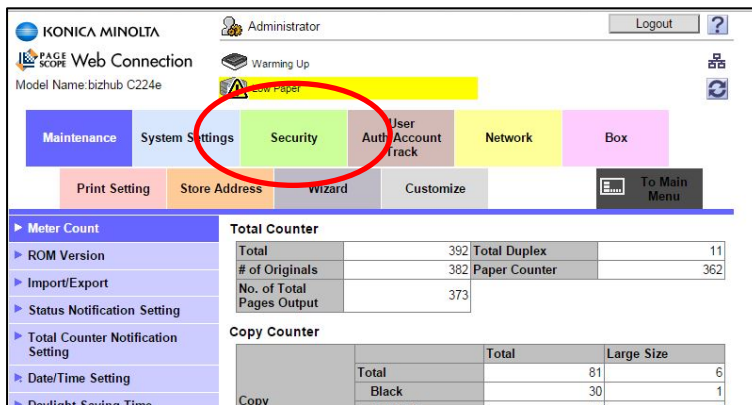


NOTE

If a security prompt is displayed, proceed with the unsecured connection.



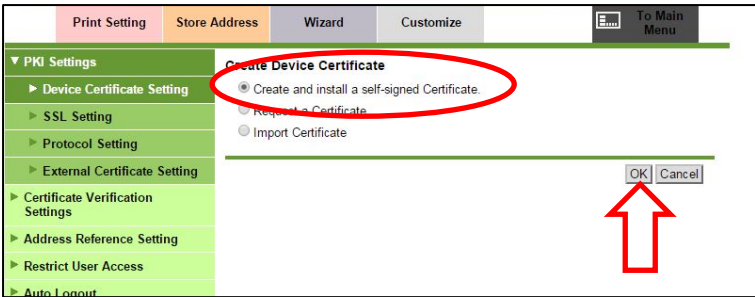
- Click on [Security].



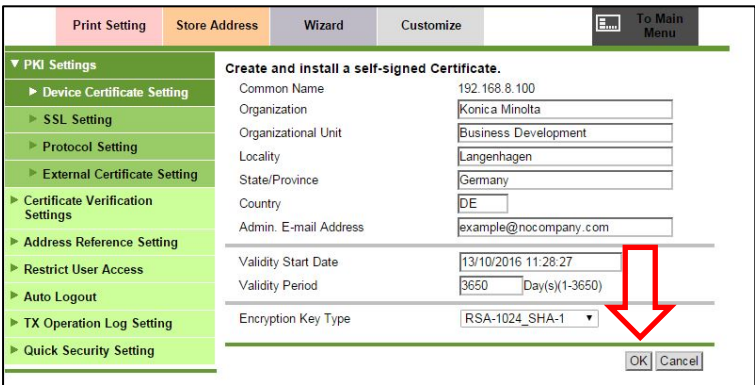
- 8. Select "Device Certificate Setting".
Click on [New Registration].



- 9. Select "Create and install a self-signed Certificate".
Confirm your setting with [OK].

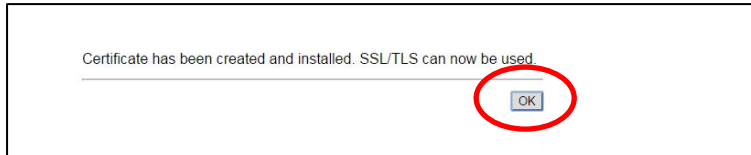


- 10. Enter the data for creating the certificate.
Confirm your settings with [OK].



NOTE
The "Validity Period" specifies for how many days the certificate will be valid. If you enter a validity period of just two days, you will need to create a new certificate after these two days.

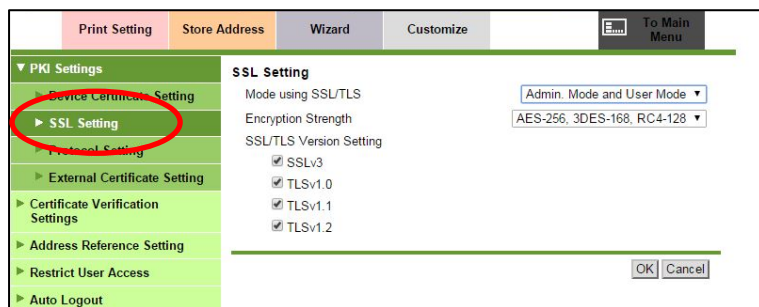
The certificate is created. Confirm the status message with [OK].



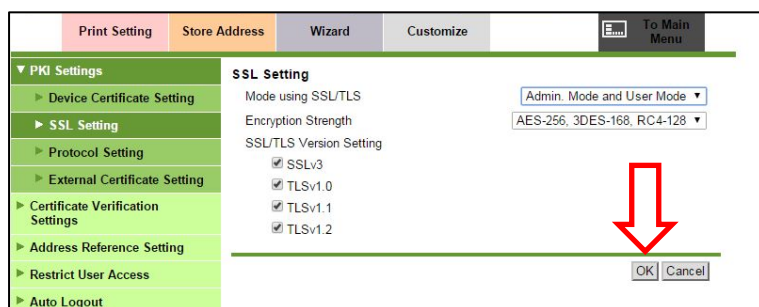
The certificate is now displayed in the device certificate list.



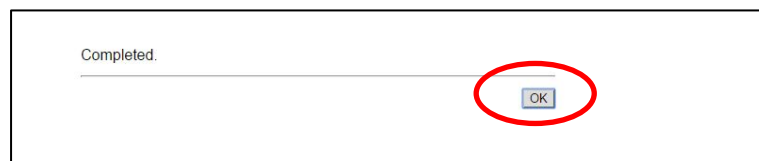
11. Select "SSL Setting".



12. Make sure that all SSL settings are configured as shown in the picture. Click on [OK] to save your settings.

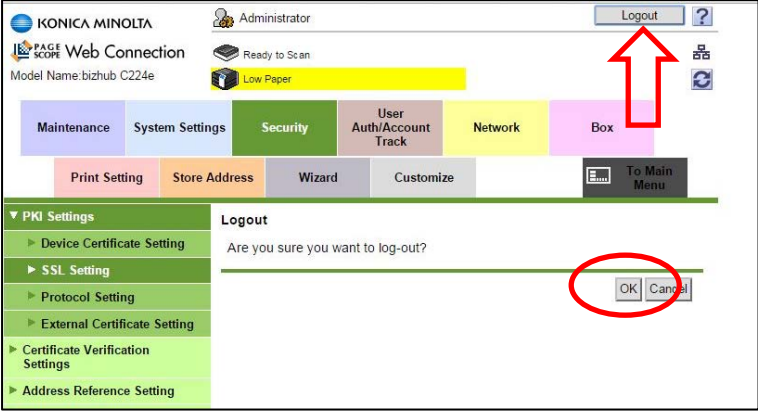


13. Confirm the status message with [OK].



The device certificate is created.

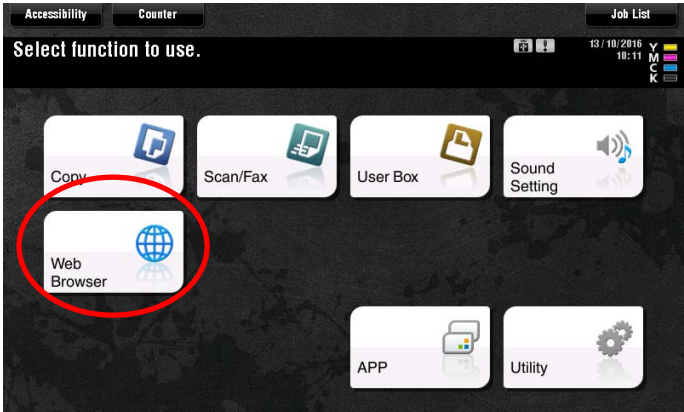
- 14. Then click on [Logout] to log out as administrator.
Confirm the final security prompt with [OK].



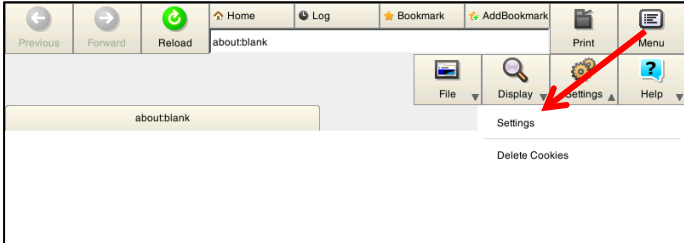
Adjust the web browser proxy settings (optional)

If you access the Internet access via a proxy server, please configure this on the MFP as well.

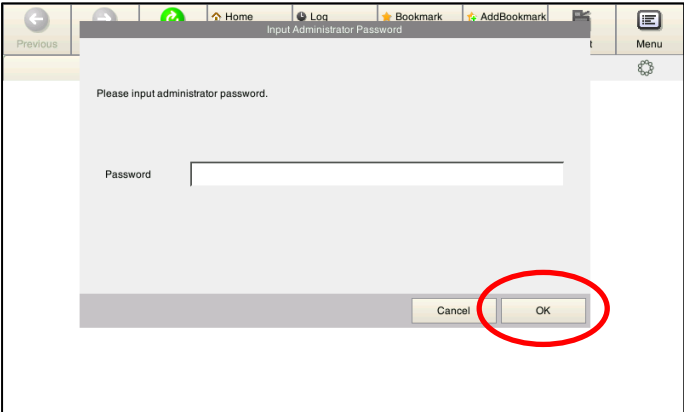
- 1. Start up the web browser on your MFP.



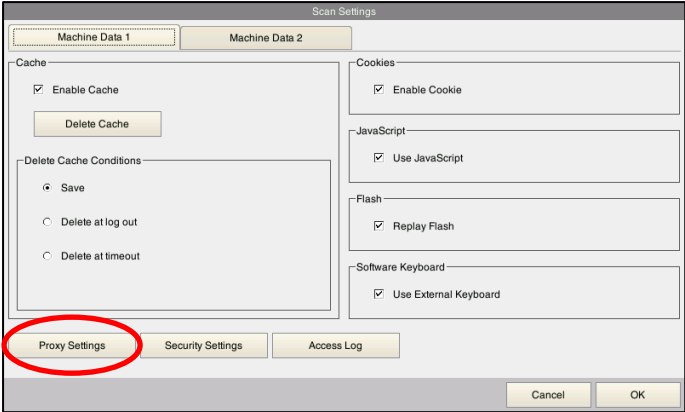
- 2. Press [Menu], [Settings] and then [Settings].



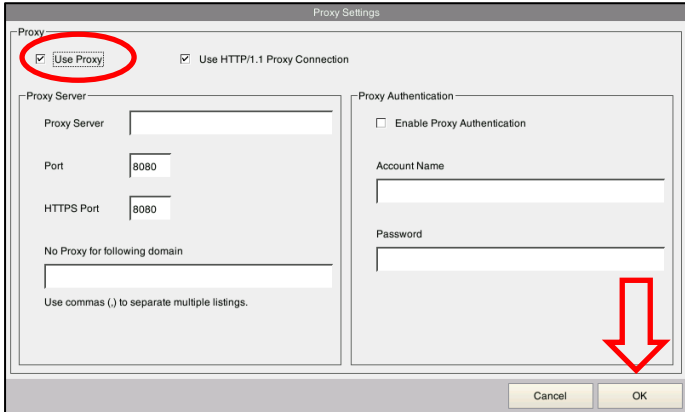
- 3. Enter the administrator password for your MFP.
Press [OK].



4. Press [Proxy Settings].



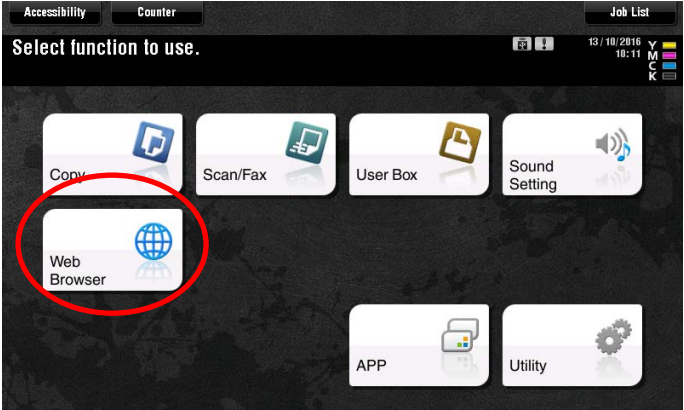
5. Select [Use Proxy] and enter the settings for the proxy server. Confirm your settings with [OK].



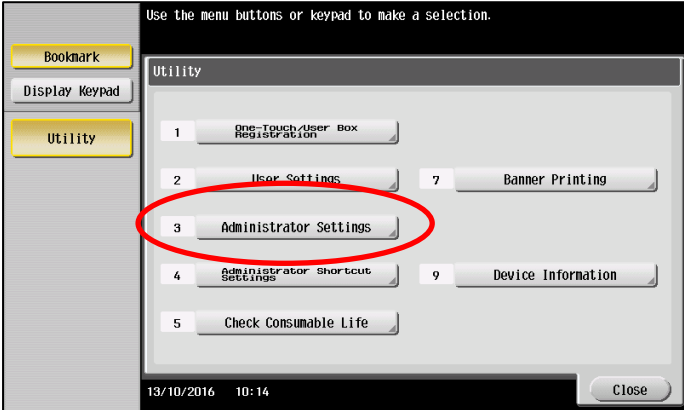
The proxy settings in the web browser are adjusted.

Enable the IWS settings

- 1. Press [Utility] in the main menu of your MFP.



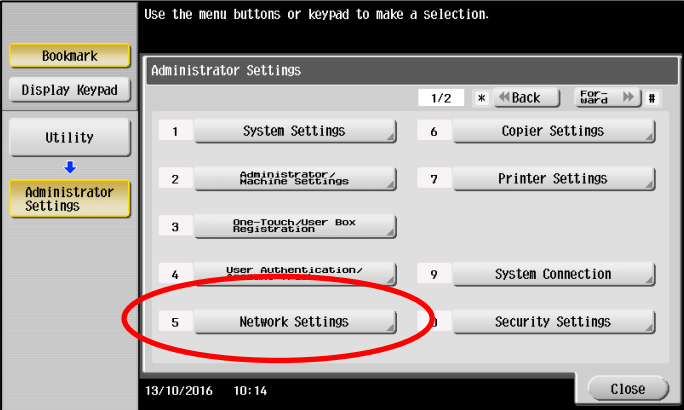
- 2. Select [Administrator Settings].



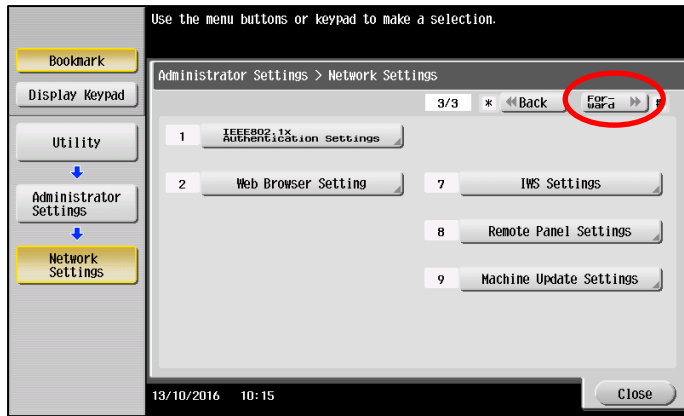
NOTE

If your administrator area is password-protected, you will need to log into it.

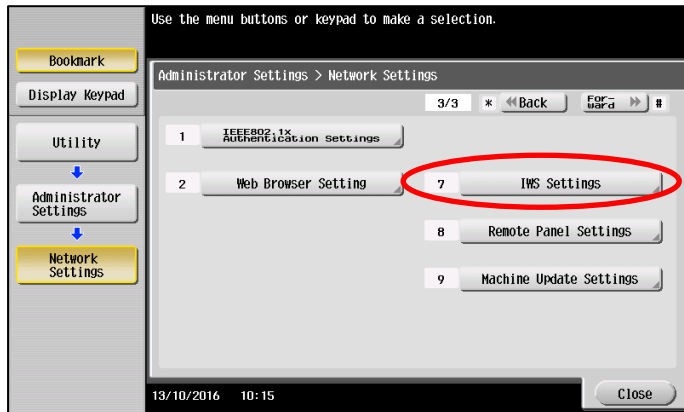
- 3. Select [Network Settings].



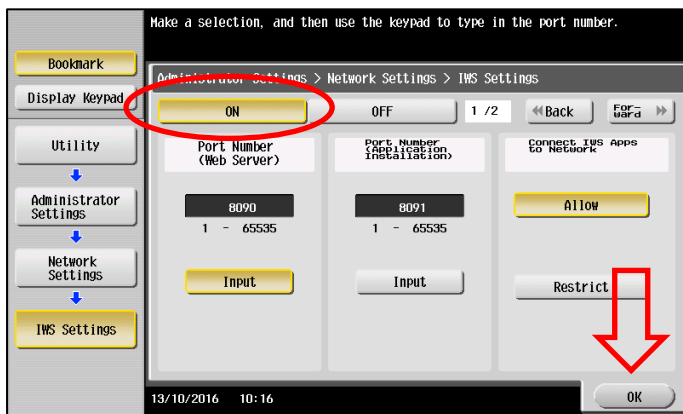
- Press [Forward] twice to access the third page of settings.



- Select [IWS Settings].



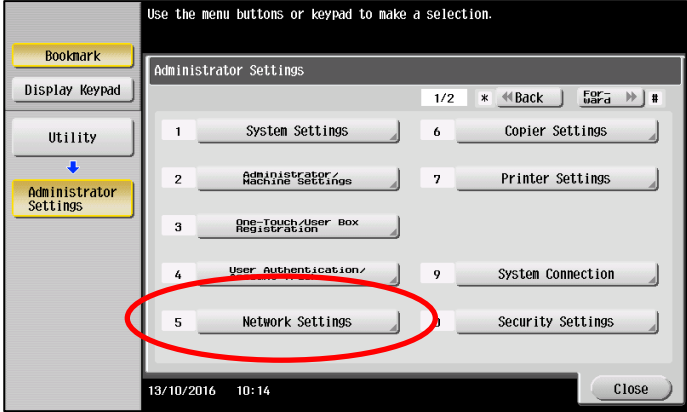
- Select [ON] to enable the IWS settings. Confirm your settings with [OK].



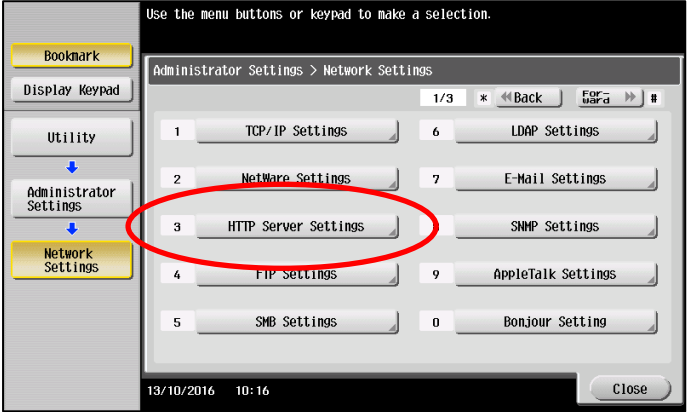
The IWS settings are enabled.

Enable HTTP Server

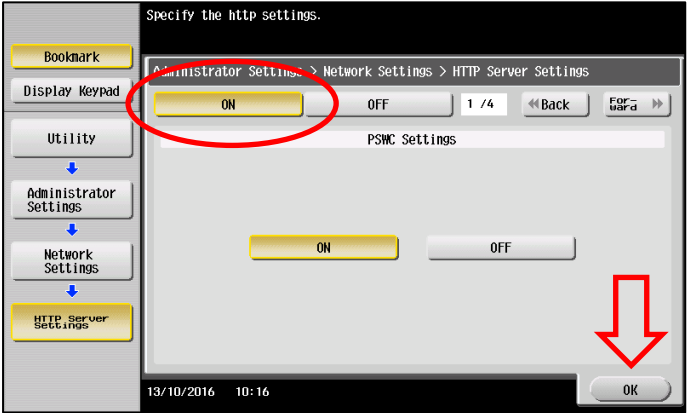
- 1. Select [Network Settings] in the administrator area of your MFP.



- 2. Then select [HTTP Server Settings].

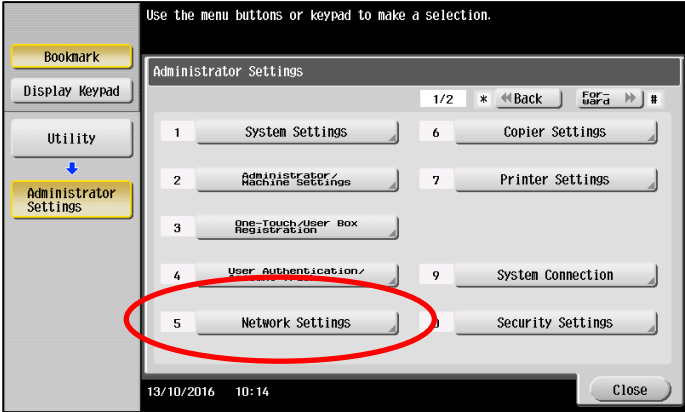


- 3. Enable the HTTP server with [ON].
Confirm your setting with [OK].

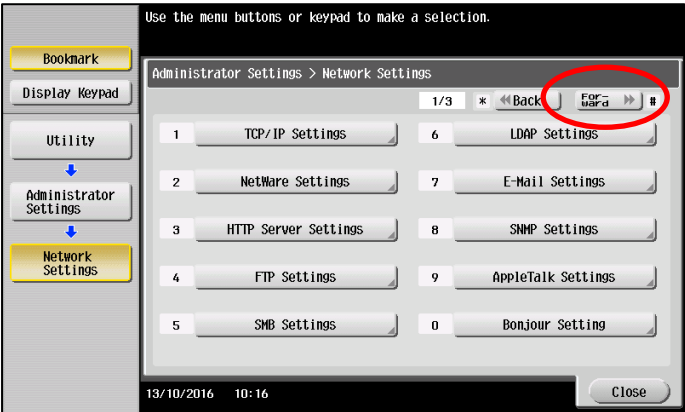


Enable SSL communication for the WebDAV server

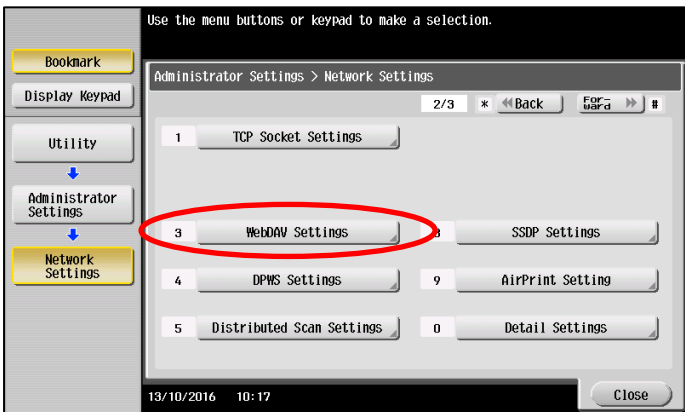
- 1. Select [Network Settings] in the administrator area of your MFP.



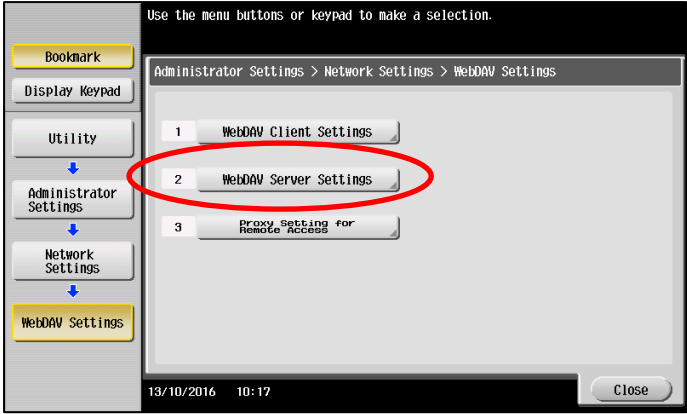
- 2. Press [Forward] to access the second page of settings.



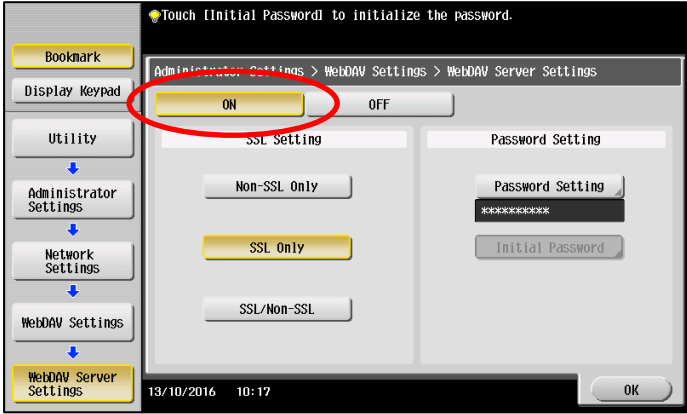
- 3. Select [WebDAV Settings].



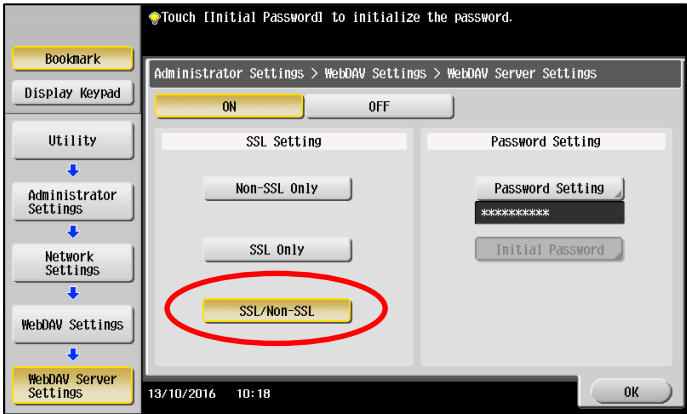
4. Next select [WebDAV Server Settings].



5. Enable SSL communication with [ON].



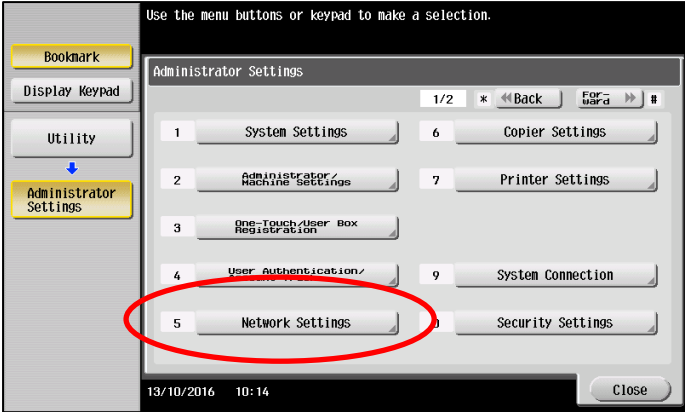
6. Make sure that [SSL/Non-SSL] is enabled.
Confirm your setting with [OK].



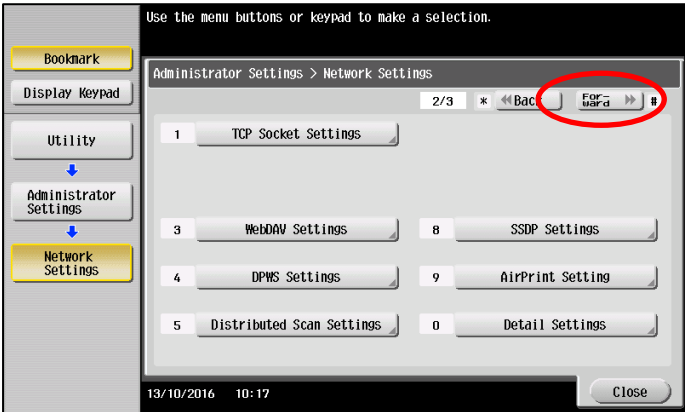
SSL communication is enabled for the WebDAV server.

Enable WebDAV client

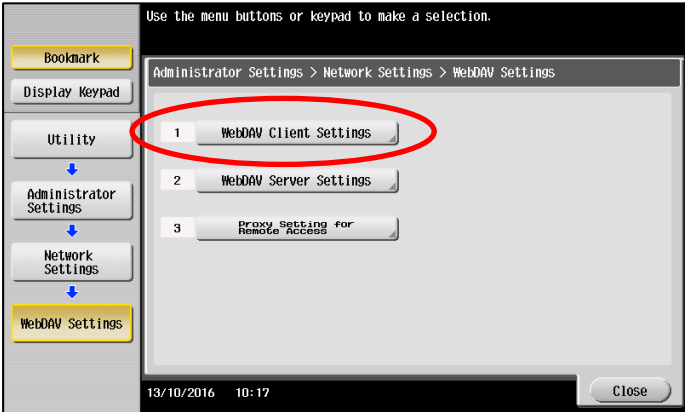
- 1. Select [Network Settings] in the administrator area of your MFP.



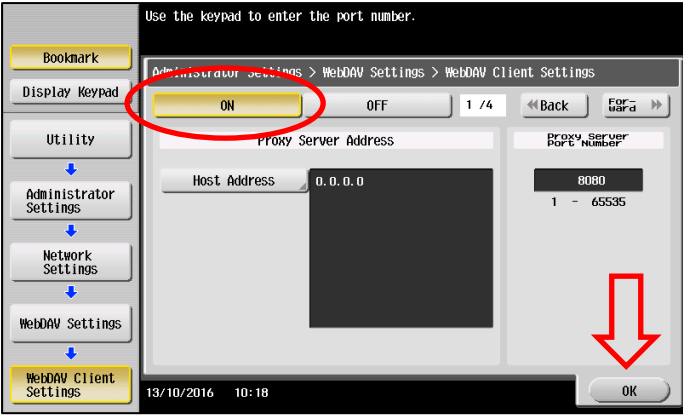
- 2. Press [Forward] to access the second page of settings.



- 3. Select [WebDAV Client Settings].



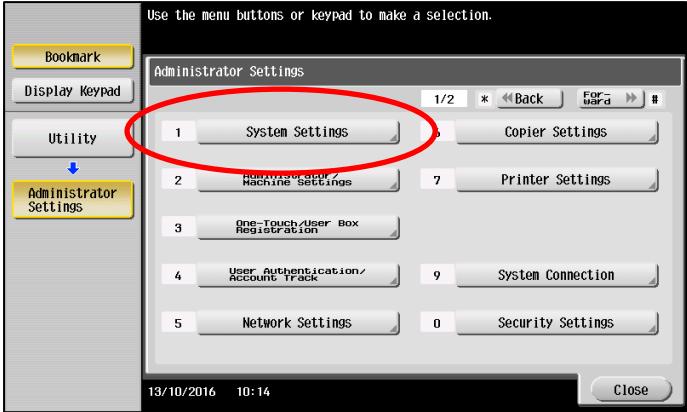
- 4. Enable the WebDAV client with [ON].
Confirm your setting with [OK].



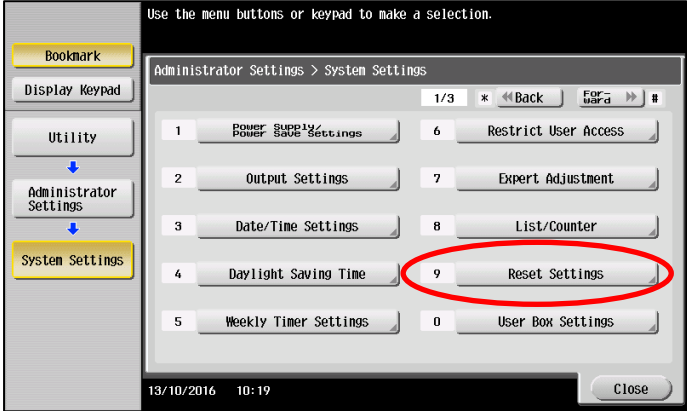
The WebDAV client is enabled.

Deactivate auto reset for web browsers

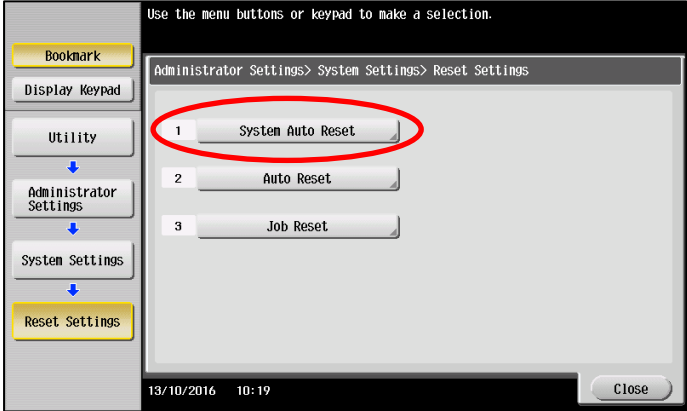
- 1. Select [System Settings] in the administrator area of your MFP.



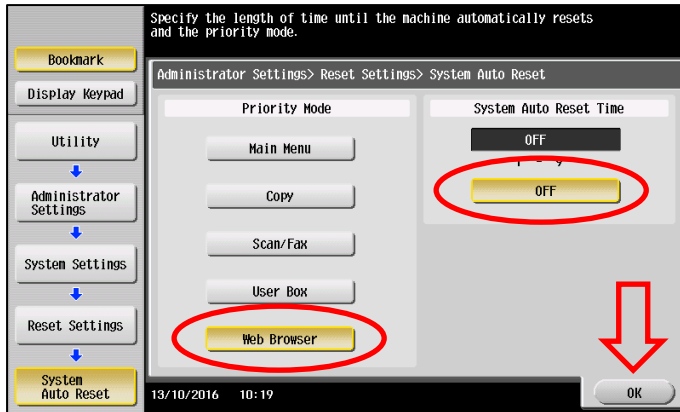
- 2. Select [Reset Settings].



- 3. Select [System Auto Reset].



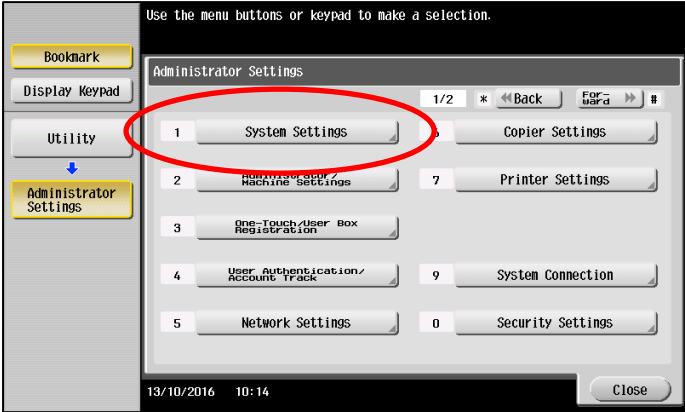
4. Select [Web Browser] and [OFF].
Confirm your setting with [OK].



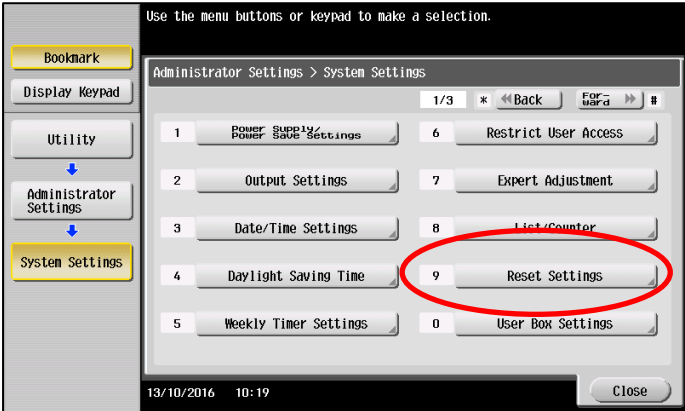
Automatic reset is deactivated for the web browser.

Deactivate system reset for web browsers

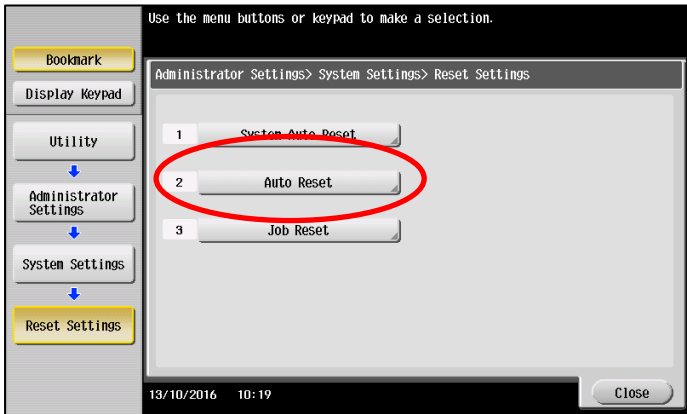
- 1. Select [System Settings] in the administrator area of your MFP.



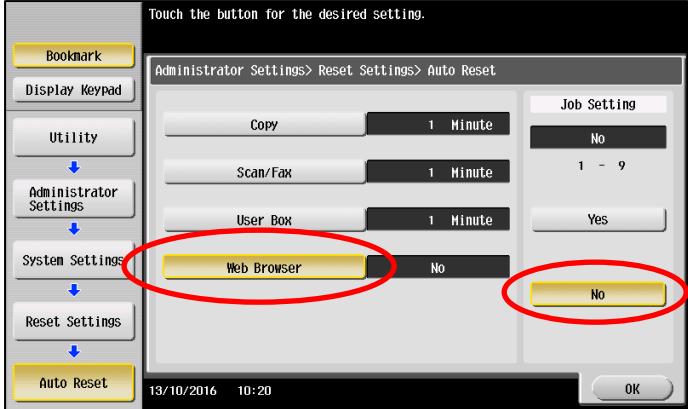
- 2. Select [Reset Settings].



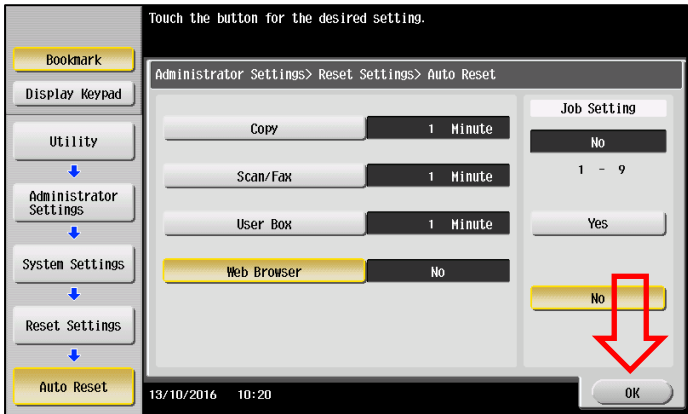
- 3. Select [Auto Reset].



- 4. Select [Web Browser].
Set the System Auto Reset time to [OFF].



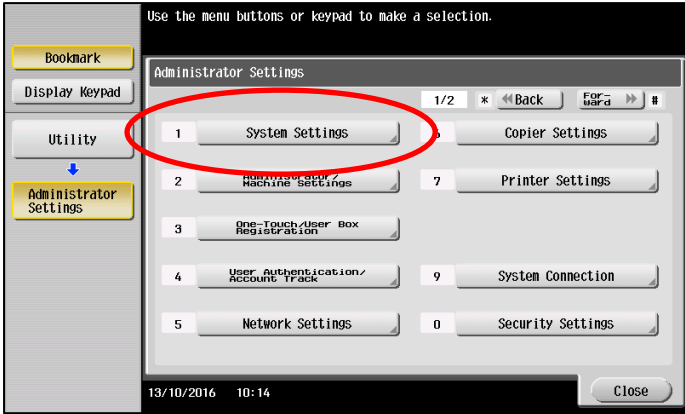
Press [OK] to save your settings.



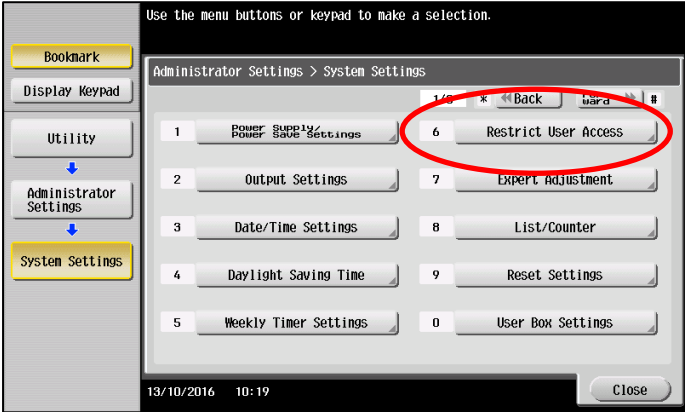
The time for resetting the system is deactivated.

Restrict deletion of jobs by other users

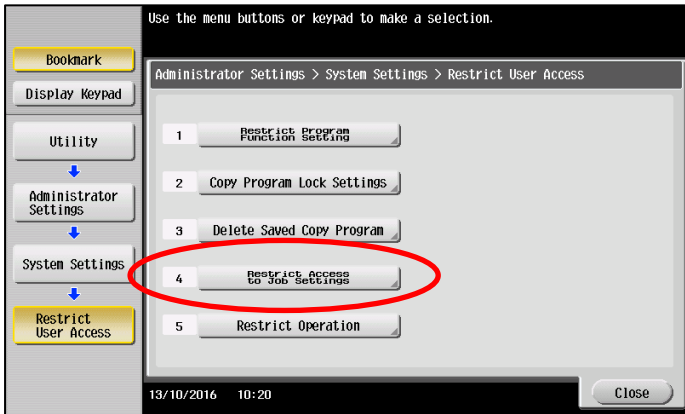
- 1. Select [System Settings] in the administrator area of your MFP.



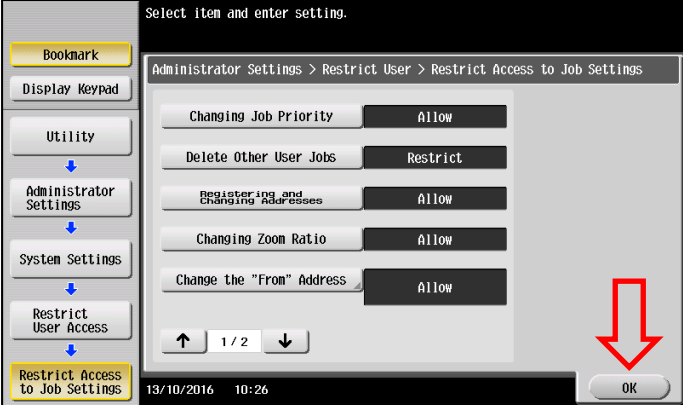
- 2. Select [Restrict User Access].



- 3. Select [Restrict Access to Job Settings].

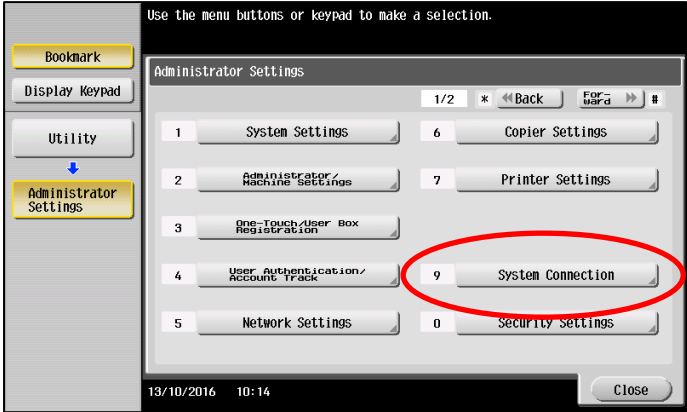


- 4. Make sure that the settings are configured as shown in the picture. Press [OK] to save your settings.

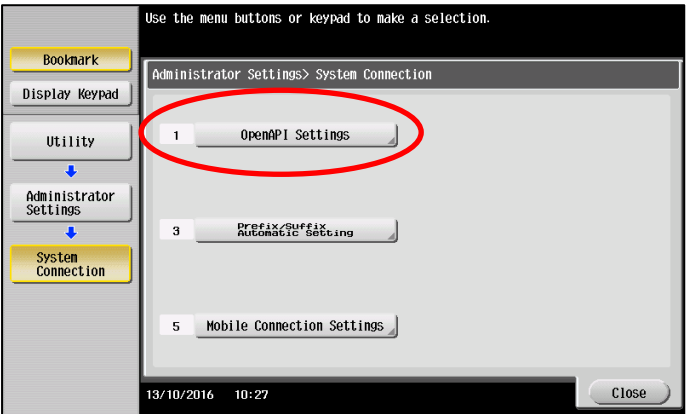


Adjust OpenAPI settings

- 1. Select [System Connection] in the administrator area of your MFP.



- 2. Select [Open API Settings].

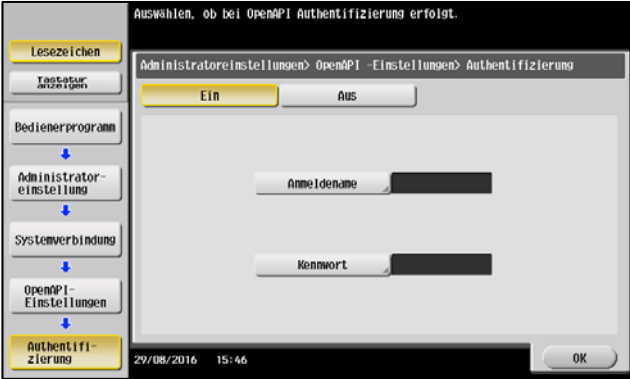


- 3. Make sure that the settings are configured as shown in the picture.



NOTE

Authentication is set to [ON]. The login name and password, however, remain blank.



Performing installations

Install the IWS installation tool

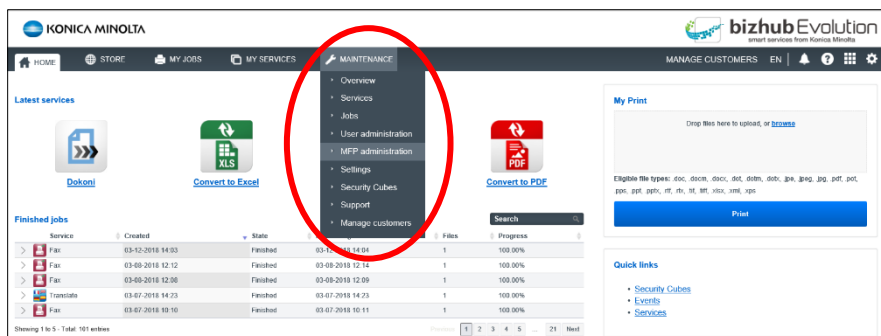
NOTE

Please first close all applications on your PC, including the virus scanner, before starting the installation process.

1. Log into bizhub Evolution on your PC.



2. Select [MAINTENANCE] and then [MFP administration].



3. Click on [Download IWS Install tool].

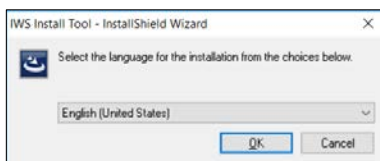


4. Unpack the downloaded file.

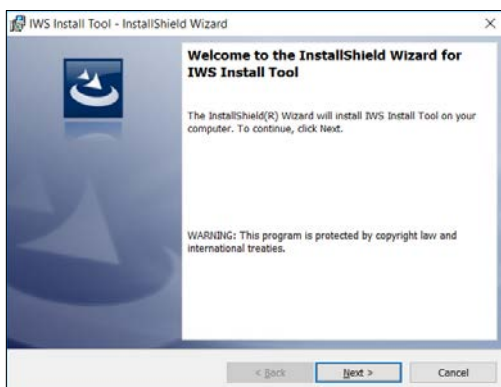
NOTE

A separate manual for the IWS installation tool is also included with the unpacked files. This contains extensive information on installing and operating of the IWS installation tool.

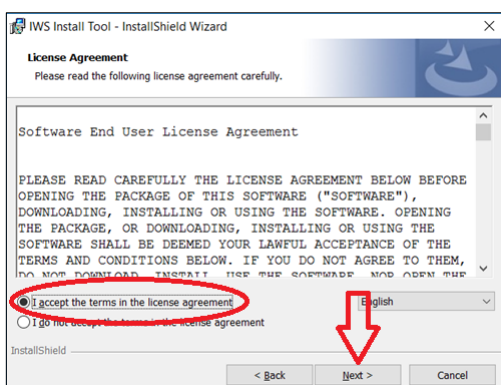
5. Start the installation that corresponds to your operating system (x86 for a 32 bit system or x64 for a 64 bit system).
6. Select the installation language "English (United States)" and click on [OK]. The installation routine starts.



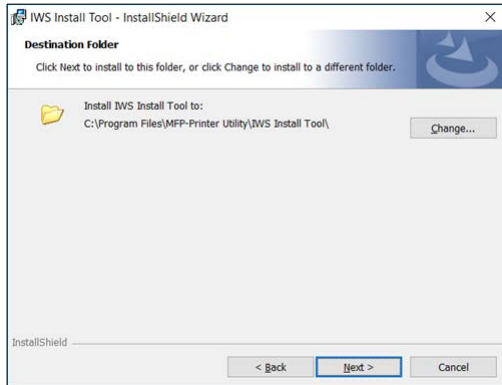
7. Click on [Next] to start the installation.



8. Accept the License Agreement. Click on [Next].



9. Select the installation directory.
Click on [Next] and run through the installation routine.

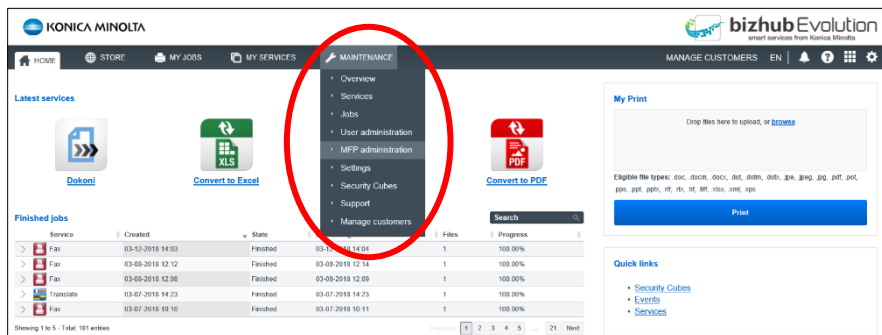


Install the bizhub Evolution app

1. Log into bizhub Evolution on your PC.



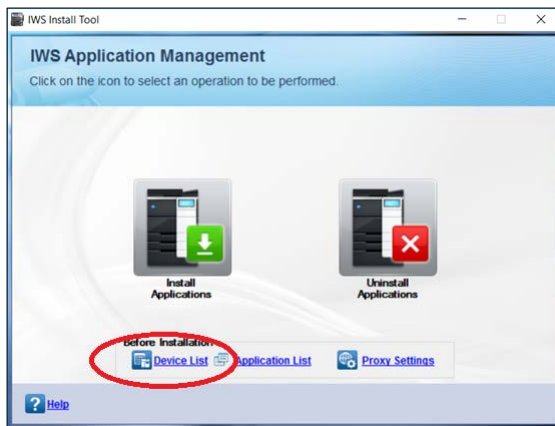
2. Select [MAINTENANCE] and then [MFP administration].



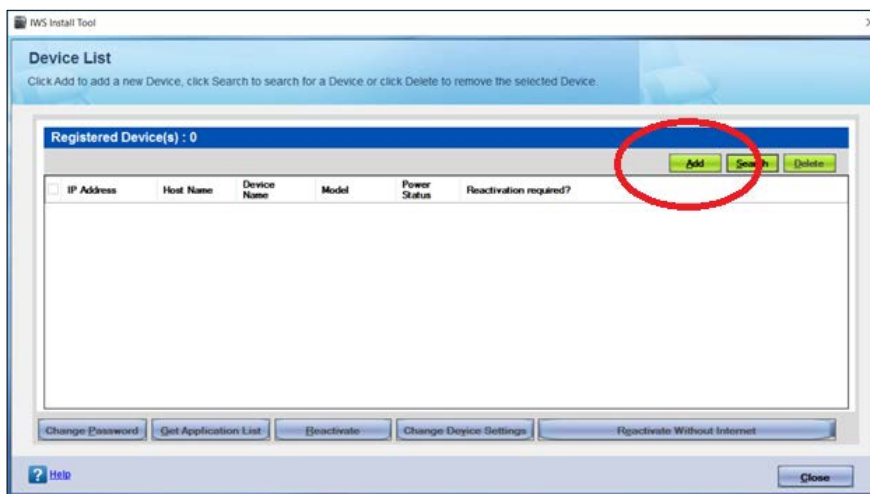
3. Click on [Download bizhub Evolution app]. In addition, click on [Download bizhub Evolution Cloud Print] if you use the fax service and need an automatic printout of your incoming faxes on an MFP.



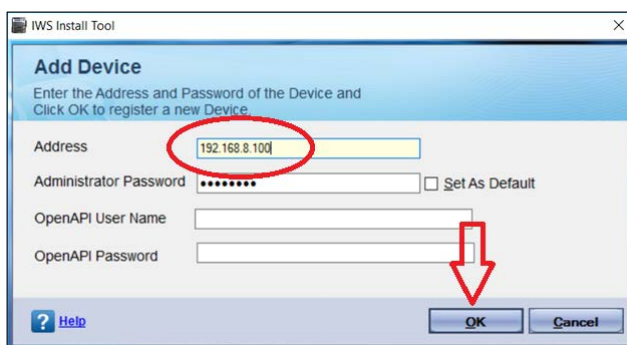
4. Start up the IWS installation tool you installed previously.
5. Select [Device List].



6. Click on [Add].

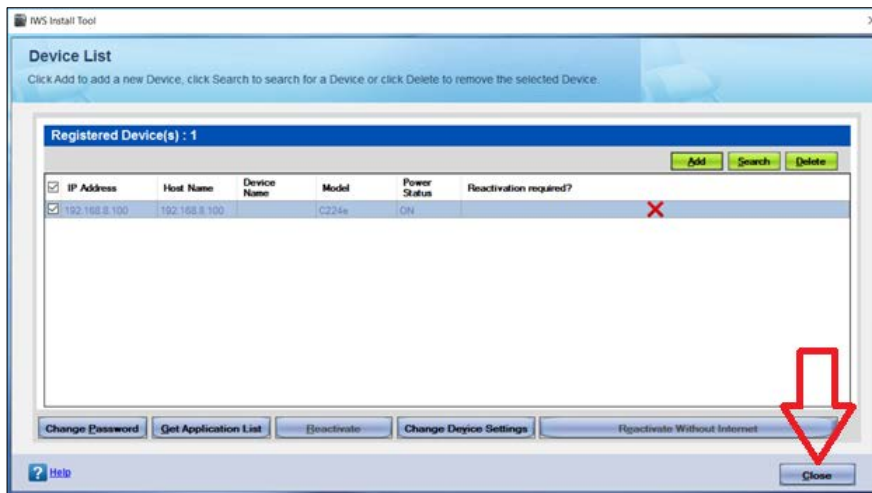


7. Enter the IP address and administrator password for your MFP. Click on [OK].

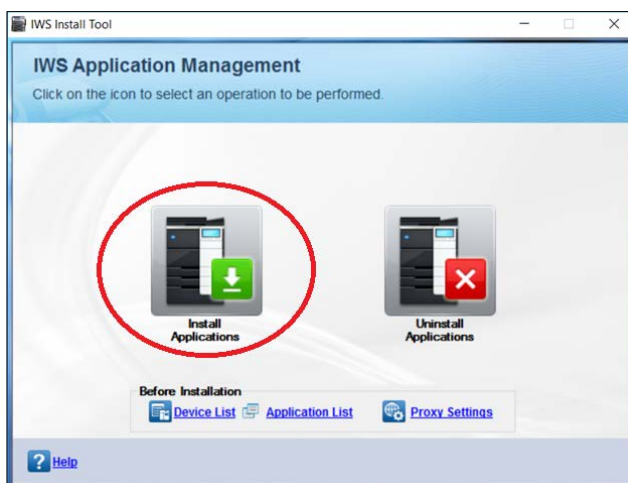


Your MFP is displayed in the device list.

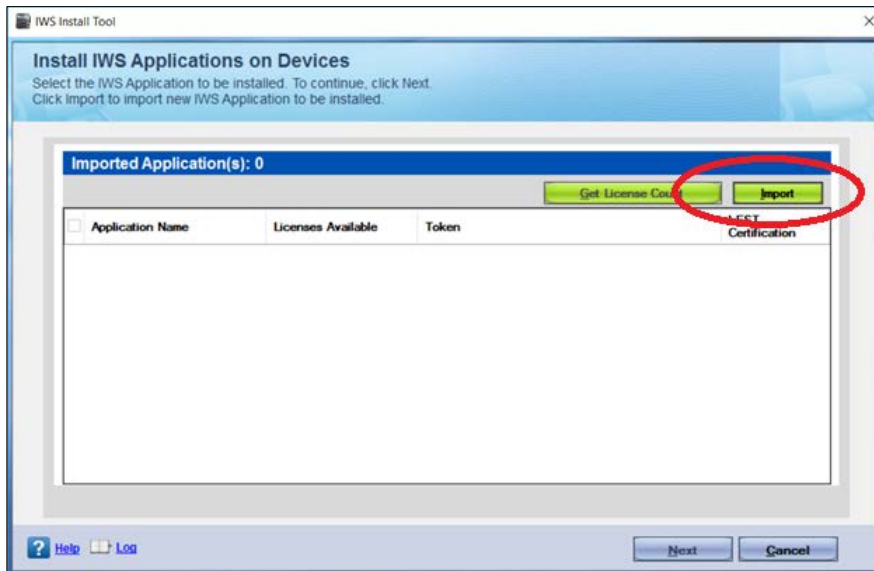
8. Repeat steps 6 and 7 until you have added all the MFPs on which you want to install the bizhub Evolution app.
9. Click on [Close] to return to the start screen.



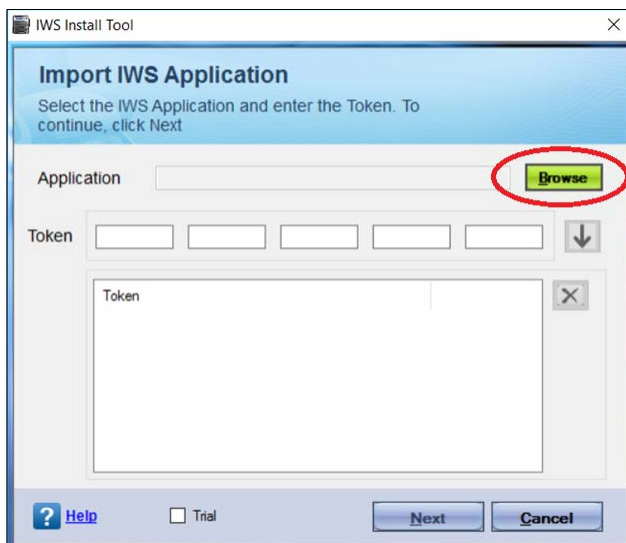
10. Click on [Install Applications].



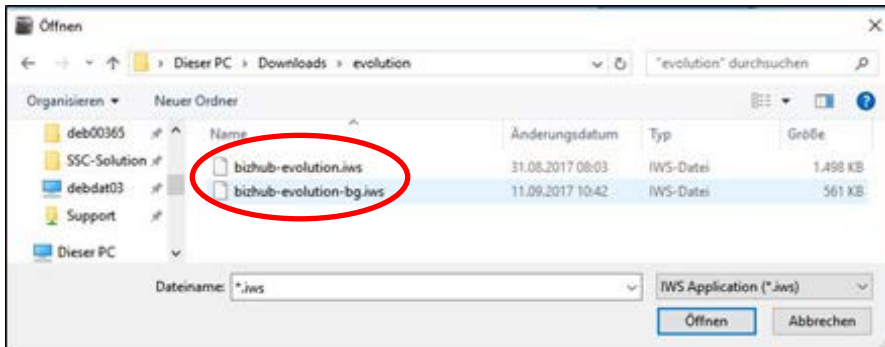
11. Click on [Import].



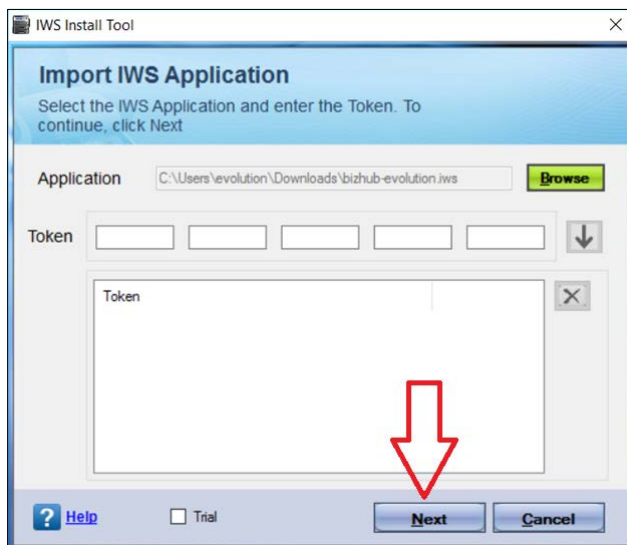
12. Click on [Browse].



13. Select the installation package for the bizhub Evolution app and if needed the Cloud Print app that you downloaded previously.
Click on [Open].



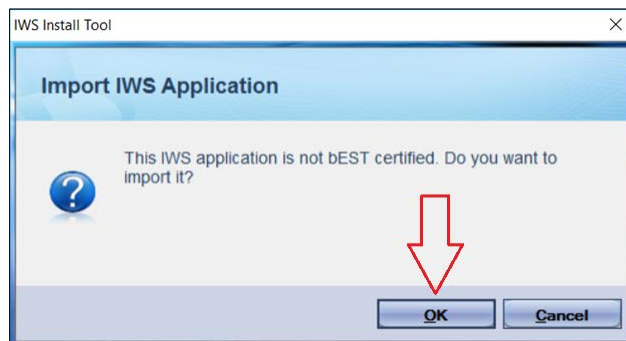
14. Click on [Next].



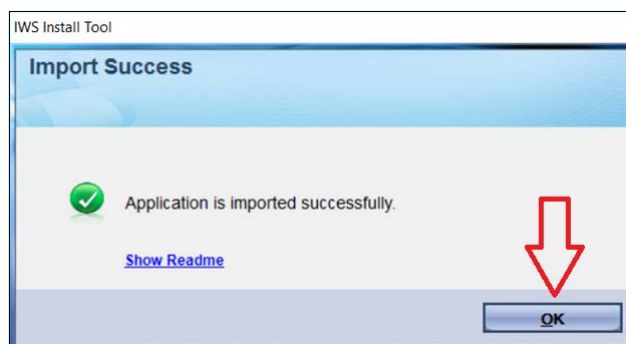
15. Accept the License Agreement.
Click on [Import].



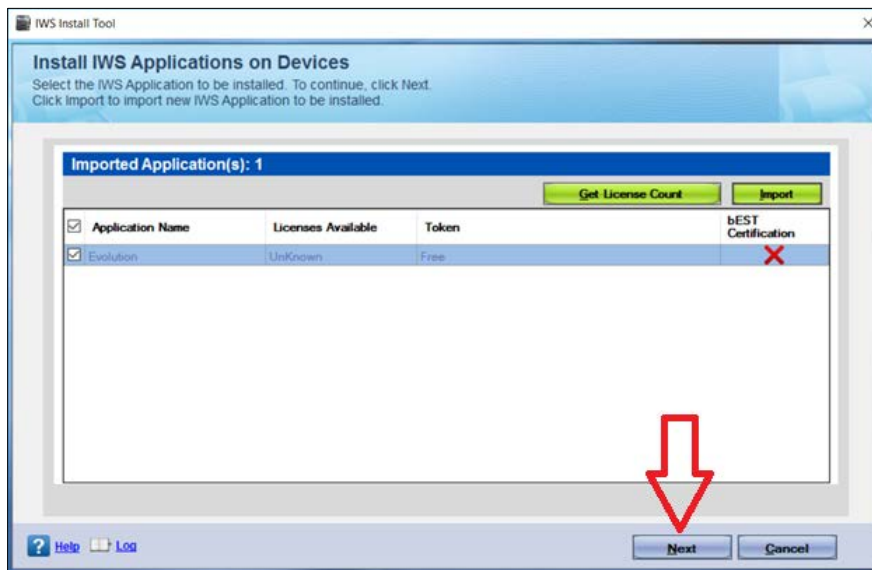
16. Confirm the prompt with [OK].



17. Confirm the status message with [OK].



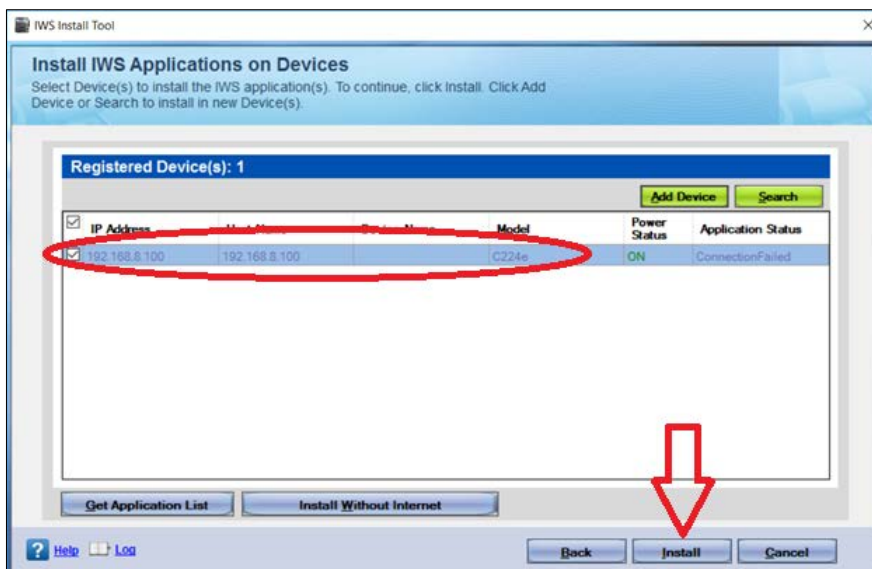
18. Click on [Next].



NOTE

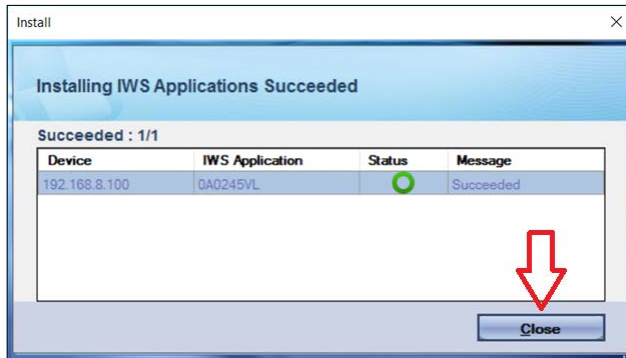
If your Windows firewall or other security program reports access to the network, please configure appropriate exceptions to guarantee access.

19. Select the MFPs on which you want to install the bizhub Evolution app.
Click on [Install].



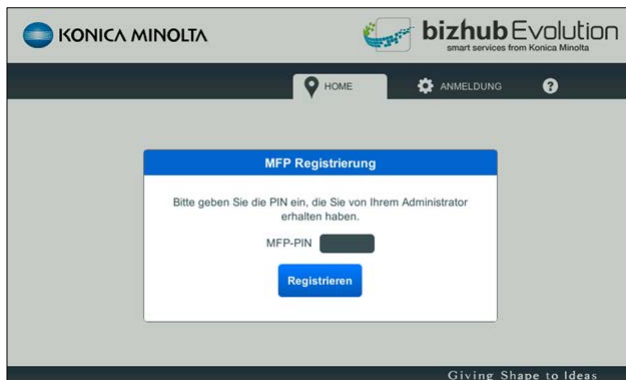
Installation starts.

20. Confirm the status message with [Close].
Installation is complete.



NOTE

After installing the application, you will see this MFP display:

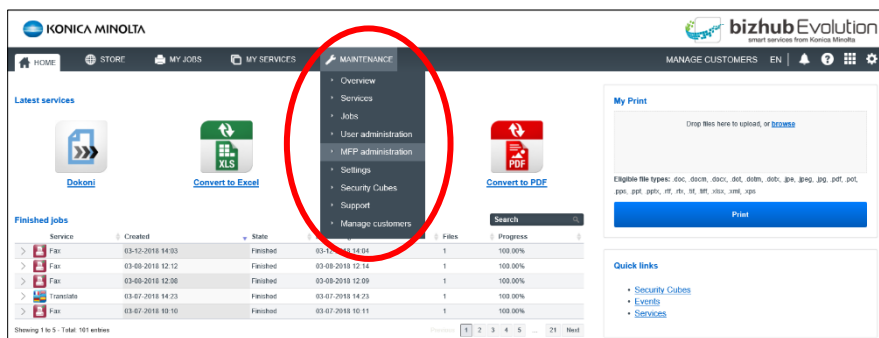


Register MFP on bizhub Evolution

1. Log into bizhub Evolution on your PC as an administrator.



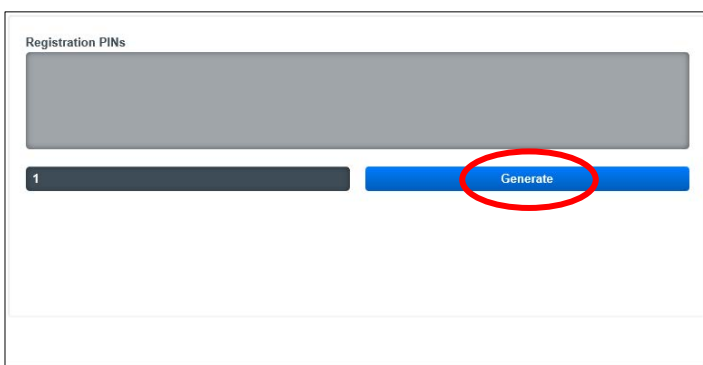
2. Select [MAINTENANCE] and then [MFP administration].



3. Click on [Register MFP].



4. Click on [Generate].



A registration PIN is generated.

NOTE

If you wish to register more than one MFP, you should generate several PINs at the same time. To do this, simply enter one of the generated PINs on an MFP. You cannot use an individual PIN more than once.

5. Enter the PIN on the MFP and click on [Register].

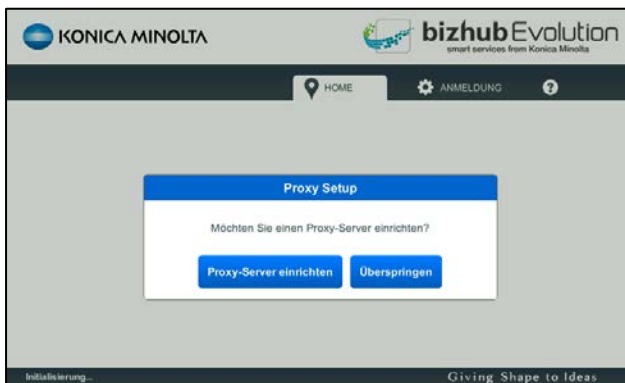


6. Press [Install Proxy Server].

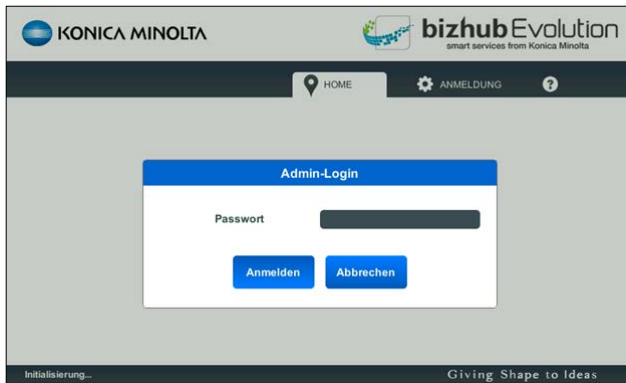
or

Press [Skip] if you are not using a proxy server.

In this case, the bizhub Evolution start screen will be displayed on the MFP.



7. Log into the MFP with the administrator password for your MFP.



The screenshot shows the 'Admin-Login' page of the bizhub Evolution interface. At the top, there are logos for 'KONICA MINOLTA' and 'bizhub Evolution smart services from Konica Minolta'. Below the logos is a navigation bar with 'HOME', 'ANMELDUNG', and a help icon. The main content area features a white box with a blue header 'Admin-Login'. Inside this box, there is a 'Passwort' label followed by a password input field. Below the input field are two blue buttons: 'Anmelden' and 'Abbrechen'. At the bottom of the page, there is a footer with 'Initialisierung...' on the left and 'Giving Shape to Ideas' on the right.

8. Enter the proxy data.



The screenshot shows the proxy configuration page of the bizhub Evolution interface. At the top, there are logos for 'KONICA MINOLTA' and 'bizhub Evolution smart services from Konica Minolta'. Below the logos is a navigation bar with 'ZURÜCK'. The main content area features two columns of settings. The first column has a checkbox for 'Proxy aktivieren', a 'Host' input field, and a 'Port' input field with '8080' pre-filled. The second column has a checkbox for 'Authentifizierung aktivieren', a 'Nutzername' input field, and a 'Passwort' input field. Below these settings are two buttons: 'Speichern' and 'Verbindung überprüfen'. At the bottom of the page, there is a footer with 'Initialisierung...' on the left and 'Giving Shape to Ideas' on the right.

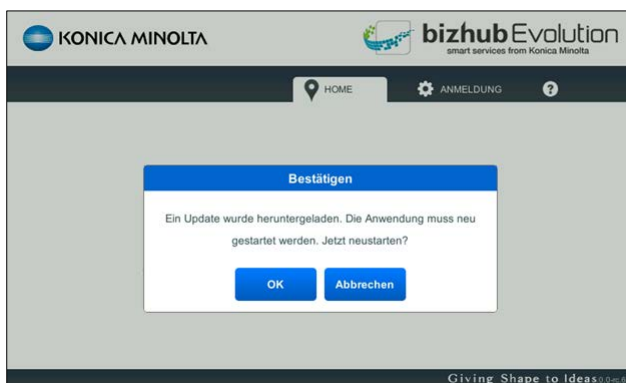
NOTE

Click on [Test connection] to test the proxy settings.

- Then click on [Save].
The proxy settings are saved. The MFP is registered on bizhub Evolution.
The bizhub Evolution start screen is displayed on the MFP.

**NOTE**

We are continuously improving and updating our software. Your MFP will download updates automatically and notify you of this on the display. To install an update, you will need to restart the application. To do this, press [OK].



If you press [Cancel], the update will be installed automatically the next time you start bizhub Evolution.

Enable MFP standard functions

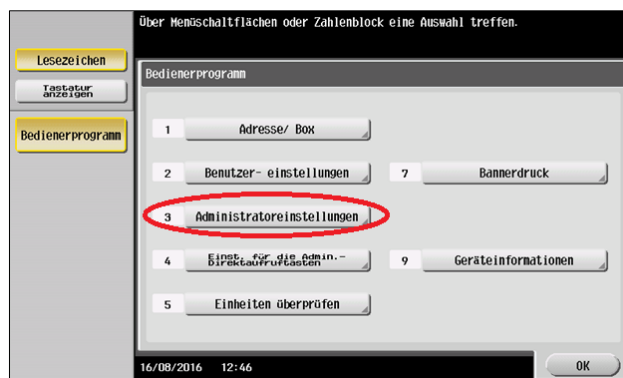
Following installation of bizhub Evolution, the standard functions of the MFP may be disabled. You will be able to tell if this has happened by the buttons for "Copy", etc. no longer appearing on the start screen.

In this case, you will need to reactivate the standard functions on the MFP.

1. In the main menu, press [Utility].



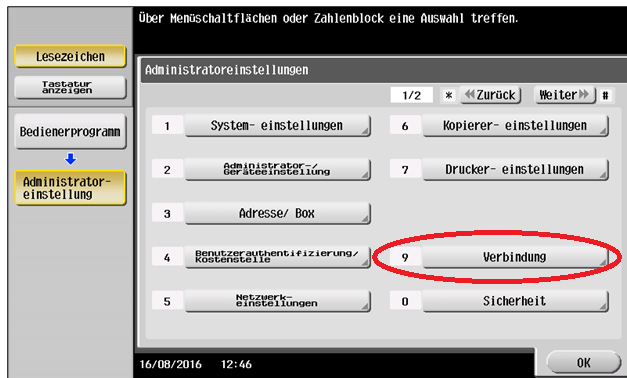
2. Select [Administrator Settings].



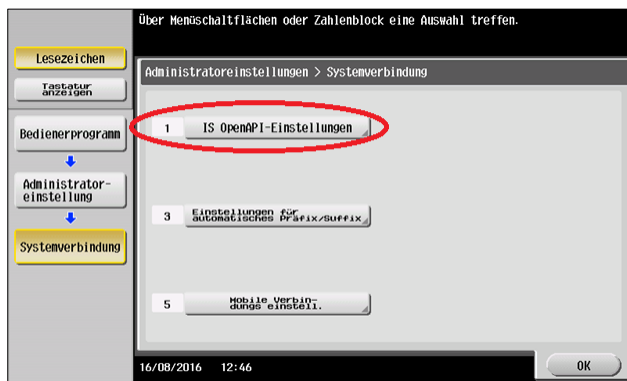
NOTE

If your administrator area is password-protected, you will need to log into it.

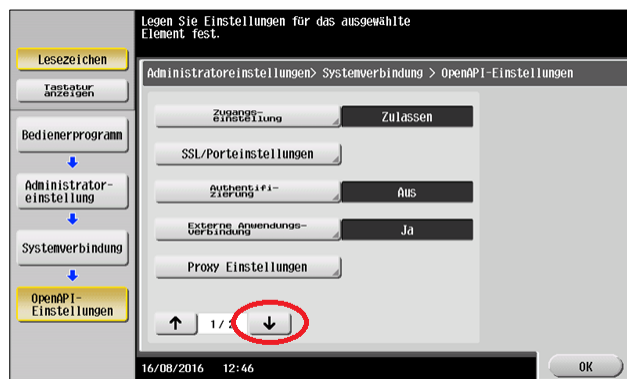
3. Select [System Connection].



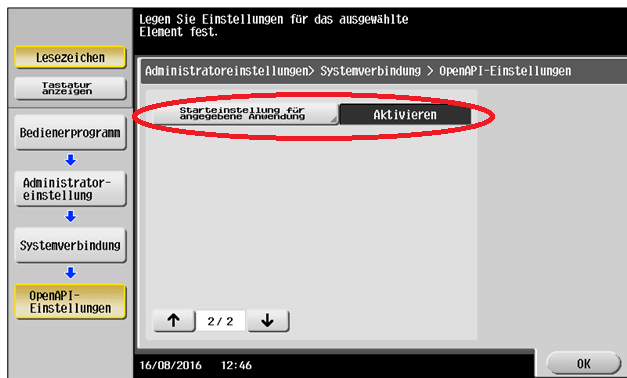
4. Select [Open API Settings].



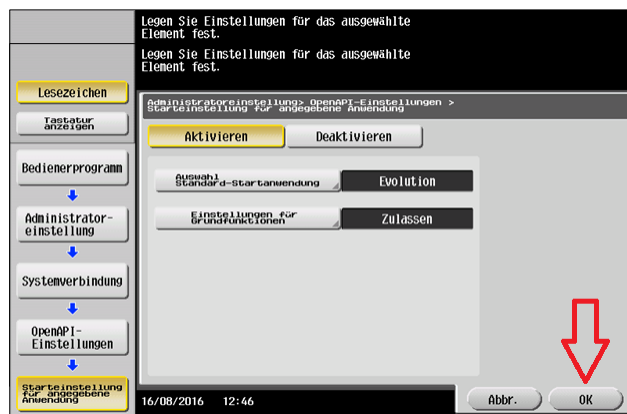
5. Use the arrow button to switch to the second page.



6. Press [Specified Application Start Setting].

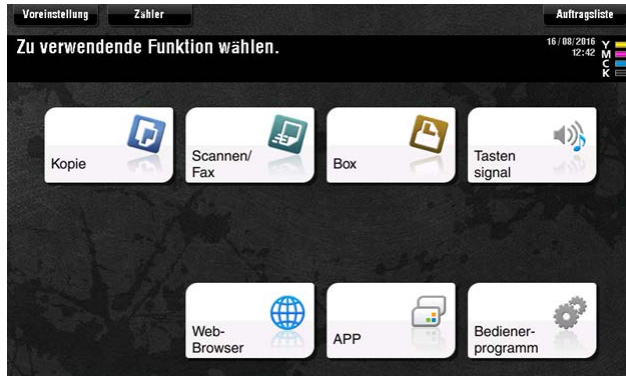


7. Select [Enable], then [Evolution] for the standard start application and [Allow] for the basic functions.



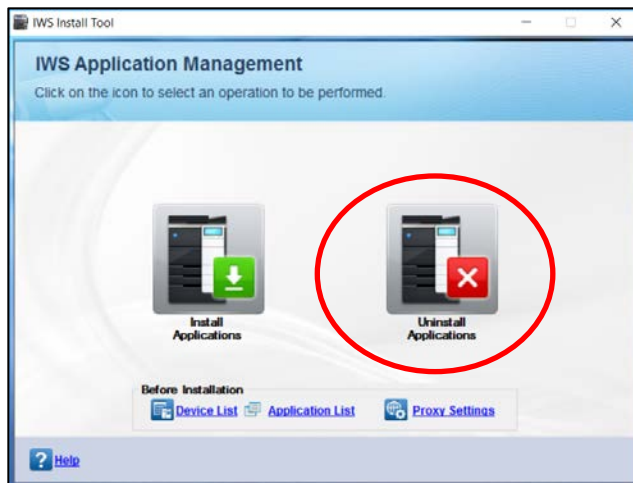
8. Confirm your settings with [OK].

When you exit the utility, the standard functions will be made fully available again.

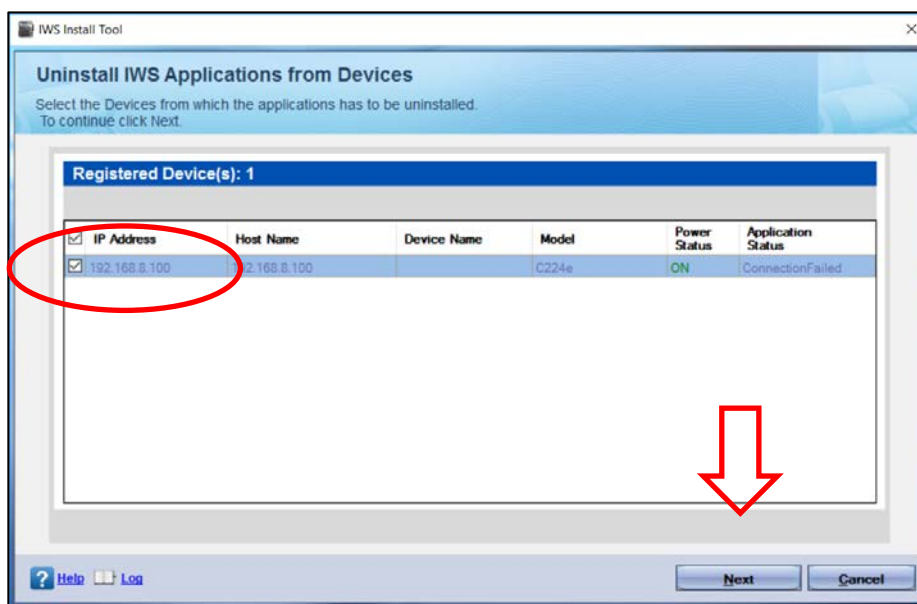


Uninstalling

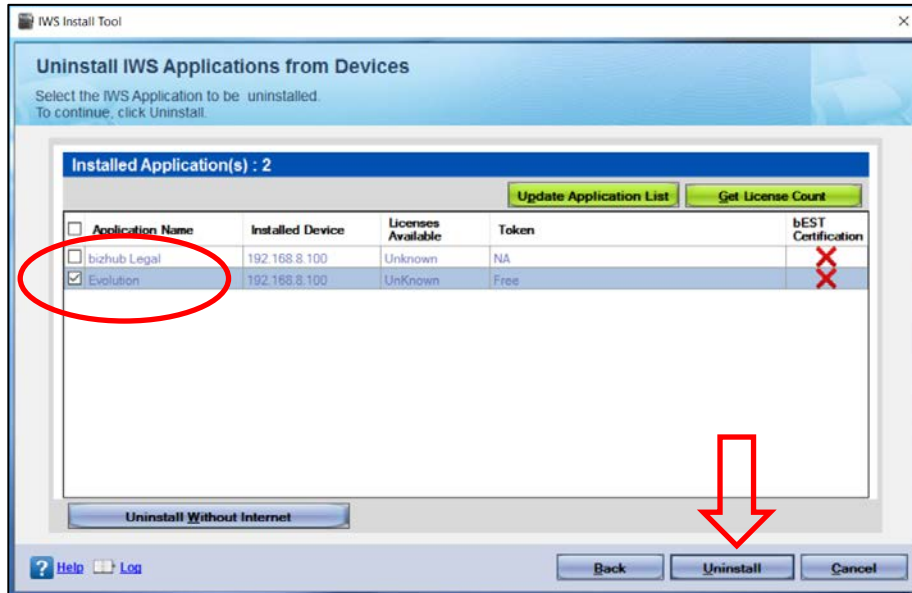
1. Start up the "IWS Install Tool".
Select [Uninstall Applications].



2. Select the MFP on which you wish to uninstall the application.
Press [Next].



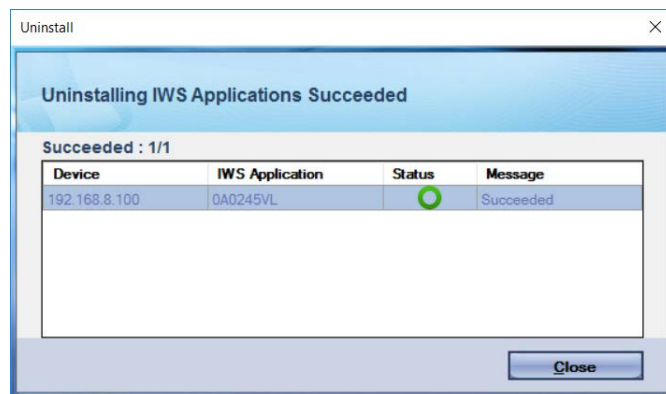
3. Select the application you want to uninstall.
Click [Uninstall].



4. Confirm the security prompt with [OK].



Uninstallation starts. Once the application has been uninstalled successfully, a status message is displayed.





KONICA MINOLTA

Konica Minolta
Business Solutions Europe GmbH
Europaallee 17
30855 Langenhagen 🇩🇪 Germany
Tel.: +49 (0) 511 74 04-0
Fax: +49 (0) 511 74 10 50
www.konicaminolta.eu